



Link up to Transport Direct.



Add the power of Transport Direct to your website for free



We can provide you with links and fields for your website that will allow your customers, guests or employees to quickly and easily find out how to get to a place, such as your office, shop or hotel.



You can place this easily created link on your site, either as a Transport Direct mini-form...

The screenshot shows a website page with a navigation menu (Ergonomics, Health & safety, Training, Articles, Clients, Ask the expert) and a search bar. The main content area is titled 'About us - Our location' and 'How to Get to System Concepts'. It provides contact details for System Concepts Ltd and lists nearby stations. A Transport Direct mini-form is embedded on the page, featuring the logo, a description, a postcode input field, and date/time selection dropdowns.

Contact Details

Atos Origin
147-149 Farringdon Road
London
EC1R 3HN

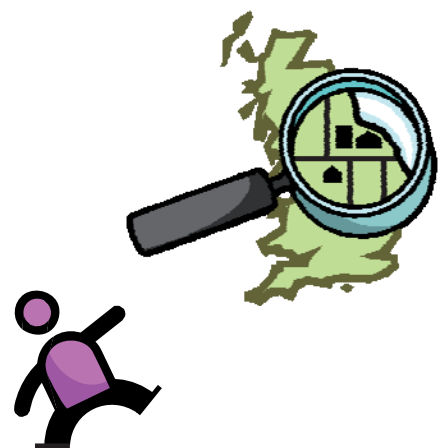
Tel. +44 020 7830 4444
Fax. +44 020 7278 0574

Downloads

[Colour Map](#)
[Equation Map](#)

Enter your post code

[Plan your journey to this office](#)



... or with your own site's formatting and visual branding...



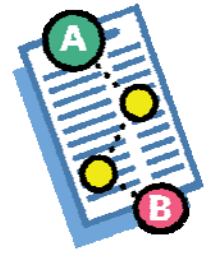
What it will do



All your customer needs to do is type in their postcode and click 'Go'



This will then open a window that shows how to get to your place.



Journey(s) found for TN37 7GA to System Concepts Ltd, 2 Savoy Court, London, WC2R0EZ

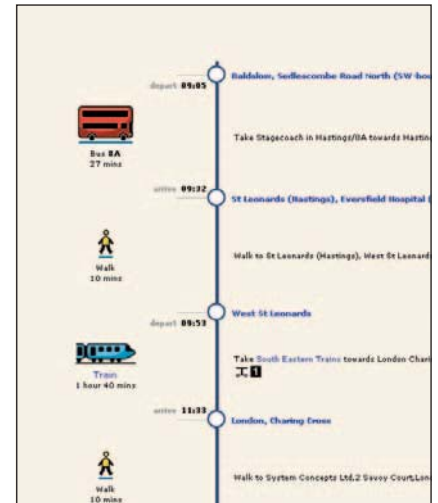
Summary of journey options Amend date/time ↓

Summary Details Maps Ticket/Costs Extend this journey

Outward journeys for Thu 01 Dec 05 leaving after 09:00						
Option	Transport	Changes	Leave	Arrive	Duration	Select
1	Bus, Train, Walk	1	09:01	11:43	2hours, 42 mins	<input checked="" type="radio"/>
2	Bus, Train, Walk	1	09:56	12:13	2hours, 17 mins	<input type="radio"/>
3	Bus, Train, Walk	1	10:06	12:43	2hours, 37 mins	<input type="radio"/>
4	Bus, Coach, Underground, Walk	5	09:01	14:54	5hours, 53 mins	<input type="radio"/>
5	Car	0	09:00	11:09	2hours, 09 mins / 64.2miles	<input type="radio"/>



From there your customer can see step-by-step directions by public transport...



Summary of directions Total distance 64.2 miles Total duration 2 hrs 9 mins Distance units miles

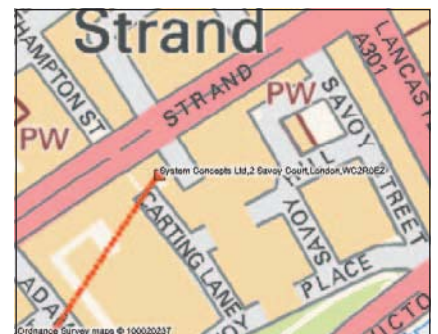
A21; M25; A25; A223; A2; A132; A3; A126; A1203; A100; A3211

Trip miles	Directions	Time
1	Starting from TN37 7GA	
2	Go on to A21 (SEDELSCOMBE ROAD NORTH), continue for 6.4 miles	09:00
3	Take second available exit off roundabout on to A21 (JOHN'S CROSS ROAD), continue for 2.1 miles	09:10
4	Take second available exit off roundabout on to A21, continue for 8.6 miles	09:14
5	Take second available exit off roundabout on to A21, continue for 1.5 miles	09:30
6	Take second available exit off roundabout on to A21, continue for 3.1 miles	09:32
7	Take second available exit off roundabout on to A21 (HASTINGS ROAD), continue for 2.9 miles	09:37
8	Take second available exit off roundabout on to A21 (PENBURY ROAD), continue for 12.3 miles	09:42
9	Join A205 (Slip Road) at Junction 5 towards Heathrow, Dartford Crossing	09:57
10	Head right on to A205 (Slip Road) towards Dartford Crossing	09:57



... or by car...

...plus a map of where you are and how to get to you.





How this will help your business

- Save time and money answering questions from your customers about how to get to a location.
- Make it even easier for your customers to get to where you are.
- Add further value to your information by showing your customers how to get to a place in a single click.
- Promote an event by showing how to get to it from anywhere in Britain.

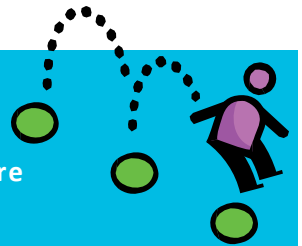


What you need to do

All you need to do is follow our simple three-step procedure (found in our 'Tips and tools' section).

The link-builder will then immediately generate the html code for you to put on your website.

You can build as many links as you want, all completely free of charge.



How are we able to offer this service for free?



Transport Direct is Britain's free online journey planner. This website has been commissioned by the Department for Transport in order to improve the provision of both road and public transport information.



No room for a form on your web page?

If space is at a premium, you can create simple hyperlinks to Transport Direct that do more than simply open our homepage.

For example, you can create a link that opens our journey planner with your premises set as the destination:

[www.transportdirect.info/web2/journeyplanning/jplandingpage.aspx?
&id=bgsite&d=381865,397786&dn=Salford Lads Club](http://www.transportdirect.info/web2/journeyplanning/jplandingpage.aspx?&id=bgsite&d=381865,397786&dn=Salford Lads Club)

Or link to a regional travel news page like this:

[www.transportdirect.info/web2/livetravel/tlandingpage
.aspx?nt=r&tm=t&sv=m&rg=South West](http://www.transportdirect.info/web2/livetravel/tlandingpage.aspx?nt=r&tm=t&sv=m&rg=South West)

For more information, see our Technical Guide:

[www.transportdirect.info/Web2/downloads/BusinessLinksTechnicalG
uide.pdf](http://www.transportdirect.info/Web2/downloads/BusinessLinksTechnicalGuide.pdf)

For assistance, please contact miles.jackson@dft.gsi.gov.uk

www.transportrect.info